



Penzance Place | Notting Hill, W11
OIEO £3,500,000







Description



An exquisite four bedroom family home nestled between Holland Park and Notting Hill.

The property spans four floors, with plenty of entertaining space across the basement kitchen/dining and snug area as well as the double reception room on the first floor. The reception room leads out via double doors to the beautifully situated garden and across the landing to the study at the back of the house.

There are three well sized bedrooms (one en suite) across the upper floors of the house and one smaller bedroom, they are either overlooking the charming garden or the lovely views of Holland park streets. There is a bathroom on the second floor and a separate WC on the basement level. The principal bedroom en suite is very grand and beautifully appointed with a stand alone bathtub and separate shower.

Penzance Place is a charming street in Holland Park and only a short stroll from Notting Hill. Local café's, shops and restaurants are right on your doorstep as is Holland Park station (Central line) which is a mere five-minute walk or 0.3 miles from the house and 0.5 miles from the North entrance of Holland Park.

Features

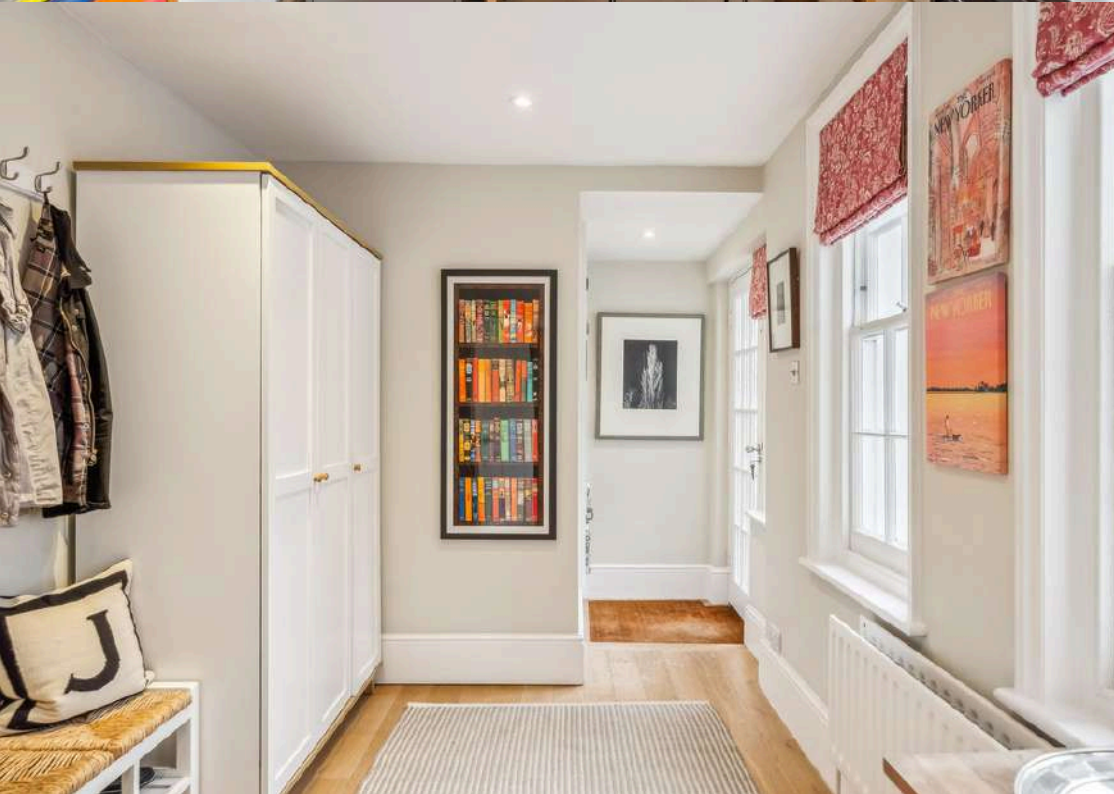
- Charming garden & terrace
- Separate study
- WC
- Open plan kitchen/living & dining area
- 4 bedrooms
- Close to Holland Park
- Fantastic location between Holland Park & Notting Hill

Additional information

- Council Borough - Royal Borough of Kensington & Chelsea
- Council Tax Band: H
- Council Tax amount p.a: £3,017.96
- Freehold
- EPC rating: D









Penzance Place, London, W11

Approximate Gross Internal Area = 2354 sq ft / 218.7 sq m



Illustration for identification purposes only,
measurements are approximate, not to scale. (ID1158270)

IN H O U S

Property perfected.

Phone: +44 (0) 207 381 1856 | Email: sales@inhous.com |