



Carlyle Court | Chelsea Harbour
Asking price £1,500,000







Description

An elegant three bedroom apartment with marina views in Chelsea Wharf.

Situated within the prestigious Carlyle Court at Chelsea Wharf, this beautifully presented lateral apartment offers spacious, modern living in one of London's most sought-after riverside developments.

The property features three generously sized bedrooms, including a principal suite with its own en suite bathroom, and a second well-appointed bathroom. A standout feature is the expansive double reception room at the front of the apartment, which opens onto a private balcony overlooking the tranquil marina—perfect for entertaining or enjoying quiet moments with a view. The well-equipped kitchen is conveniently set just off the reception area, maintaining the natural flow of the space.

This apartment is offered in good condition throughout and benefits from secure underground parking, a porter, and access to the well-maintained communal areas of this gated development.

Ideally located, Chelsea Wharf is moments from Imperial Wharf station and a short stroll to the boutiques, restaurants, and galleries of the iconic King's Road.

Additional information: 87 year lease, service charge £12,000 p.a, ground rent £250 p.a
Council tax borough, Hammersmith & Fulham, Band H, £3,000 p.a

Features

- Three bedrooms
- Marina views
- Secure allocated parking space
- Porter
- Balcony
- EPC rating: B







Chelsea Harbour, London, SW10

Approximate Gross Internal Area
1567 sq ft / 145.6 sq m

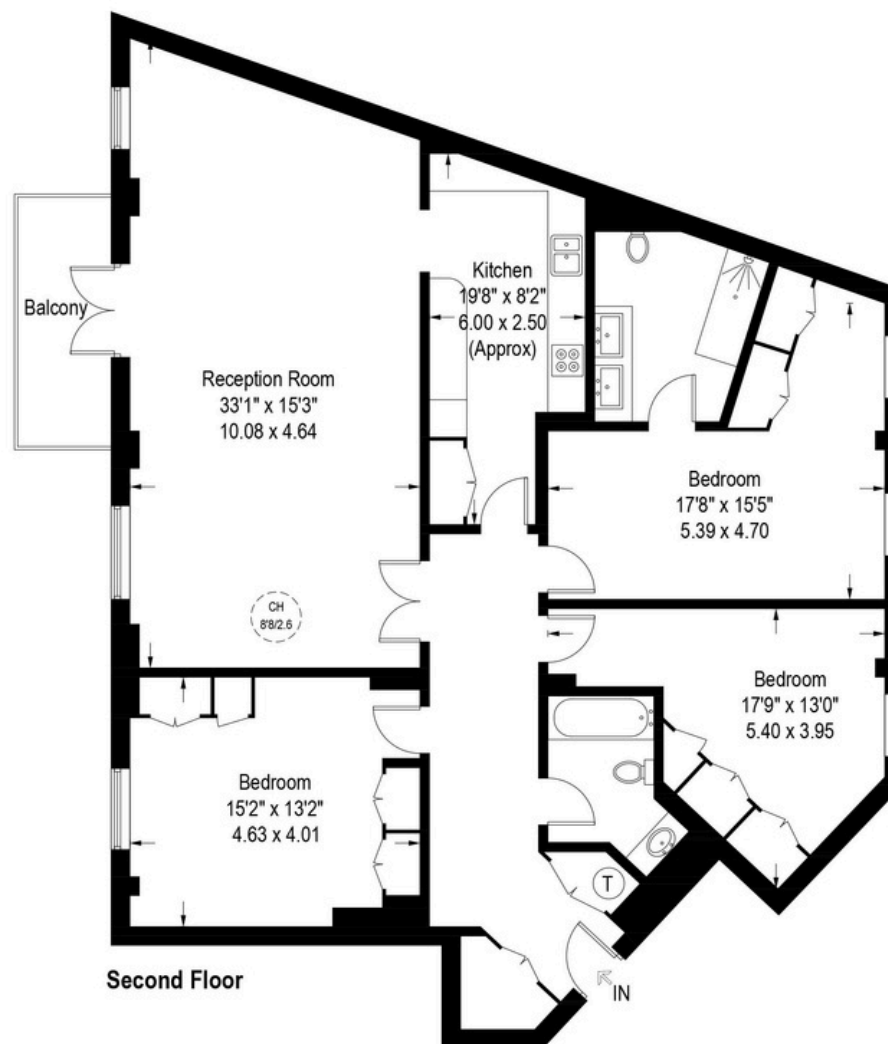


Illustration for identification purposes only,
measurements are approximate, not to scale. (ID1192324)

IN H O U S

Property perfected.

Phone: +44 (0) 207 381 1856 | Email: sales@inhous.com |