



Porteus Place | Clapham, SW4  
OIEO £1,250,000









# Description

A stunning penthouse apartment in the heart of Clapham Old Town – Best views in town! INHOUS are proud to bring to market this exceptional third-floor penthouse apartment, superbly located just moments from Clapham Common and Clapham Old Town. Boasting arguably some of the finest panoramic views across London, this modern and beautifully finished home combines style, space, and convenience in one impressive package.

Set off the sought-after Macaulay Road, Porteus Place is a unique development steeped in history highlighting an industrial feel with modern convenience. This spacious and light-filled two-bedroom apartment offers contemporary living in a vibrant, well-connected location. Inside, you'll find a stylish open-plan kitchen and reception area, two well-proportioned double bedrooms, two en suite bathrooms, an additional WC, and abundance of storage throughout.

There is the extra benefit of a secure, allocated parking space in the basement carpark of the adjacent building, as well as a concierge service Monday to Friday.

Step outside to enjoy a wraparound balcony, perfect for entertaining or relaxing, with private balconies also accessed directly from each bedroom and the living area.

Surrounded by a fantastic array of cafes, restaurants, supermarkets, and bars, this apartment places you in the heart of the Clapham lifestyle.

Excellent transport options are within easy reach, including Clapham Common and Clapham North Underground Stations, Wandsworth Road Overground, and Clapham High Street. The 137 bus from Sloane Square stops at the end of the road.

Whether you're a first-time buyer, downsizer, or investor, this turn-key penthouse is not to be missed. Available with no onward chain. Use of CGI furniture in images

## Features

- Wraparound balcony
- Two generous double bedrooms
- Two bathrooms + Additional WC
- Exceptional panoramic views
- Concierge (Monday-Friday)
- Close to Clapham Common Underground
- Allocated secure parking space
- Moments from Clapham Common
- 1,049 sq/ft

## Additional information

- Council Borough: London Borough of Lambeth
- Council Tax Band: E
- Council Tax amount p.a: £2,300
- Leasehold: 139 years remaining
- Services charge: £6,000 p.a
- Ground rent: £500 p.a
- EPC rating: C













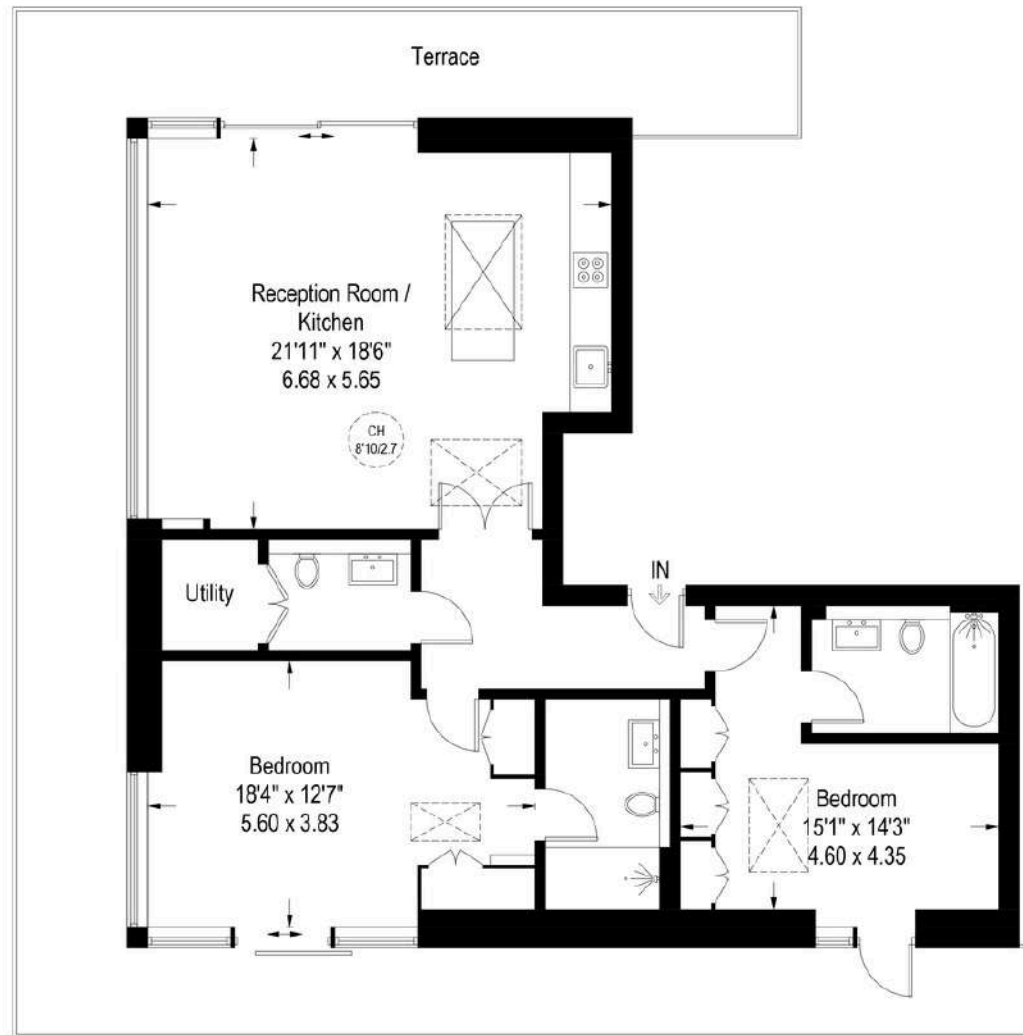






## Porteus Place, London, SW4

Approximate Gross Internal Area = 1049 sq ft / 97.5 sq m



**Third Floor**

Illustration for identification purposes only.  
measurements are approximate, not to scale. (ID1189566)



# IN H O U S

Property perfected.

Phone: +44 (0) 207 381 1856 | Email: [sales@inhous.com](mailto:sales@inhous.com) |